

CASE STUDY – AMCO Selby Swing Bridge Fender Repairs

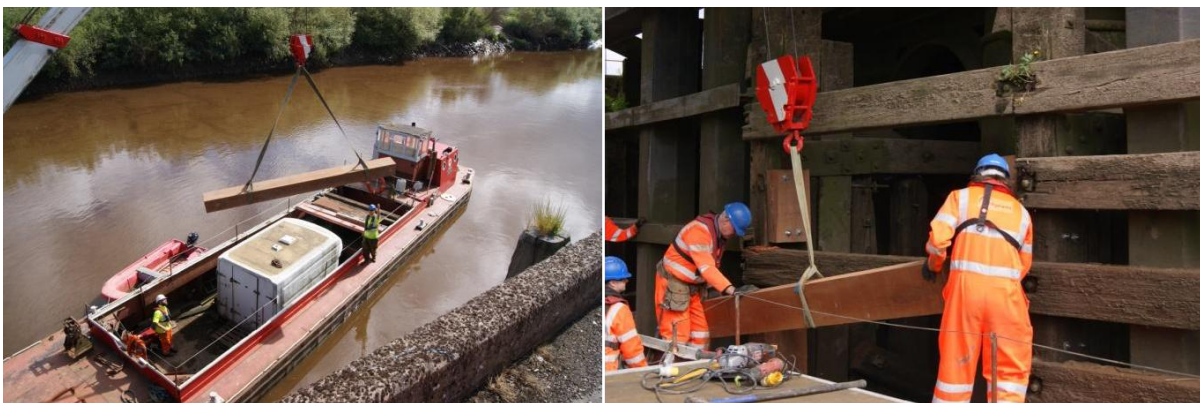
Bridgeway were commissioned by Amco to undertake repairs to the fenders on Selby Swing Bridge. No design or typical details existed so Bridgeway proposed a number of design options for Network Rail to select a suitable option. Following consultation with suppliers of hardwood timber, Ekki (an exotic African Hardwood suitable for Marine Environments) was procured and machined to the correct dimensions.

Work took place with C&RT permit in place. The fenders were craned onto a Barge that carried plant/materials and tradesmen to the structure. The Fenders were replaced over two days on the tidal River Ouse.

Before:



During:



After:

