

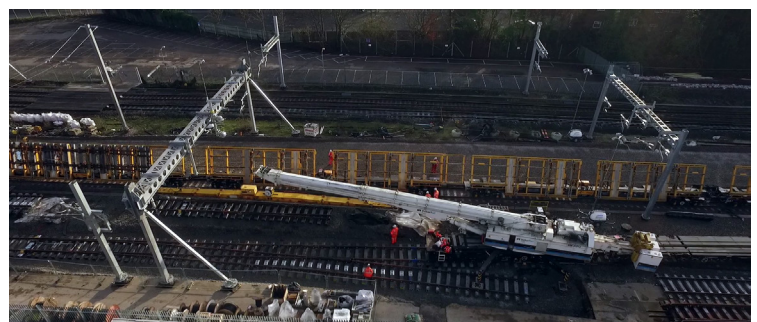
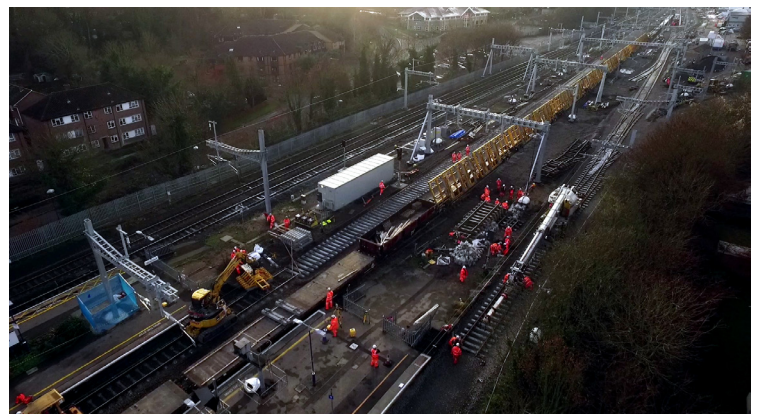


Bridgeway Aerial* was contracted to undertake 4k video filming at Maidenhead, where track laying and other maintenance were taking place.

Although a possession was in force for the work being undertaken, it was not required for the filming.

The objective was to create a video that could be used to explain to the rail travelling public why delays were being caused and what the outcome would be.

The location was just within the London Control Traffic Region A airspace and partly within White Waltham's Air Traffic Zone. Coordination with both these airports was an essential requirement



t: 0115 919 1111

t: 01865 309 636

enquiries@bridgeway-aerial.co.uk

www.bridgeway-aerial.co.uk